



first steps
& beyond

Black Maternal & Infant
Community Collaborative

First Steps & Beyond



First Steps and Beyond Overview

is designed to decrease Black infant mortality rates, reduce preterm birth rates, increase knowledge about safe sleep recommendations for infants, and provide additional support in the fourth trimester.

Every baby born in Allegheny County will celebrate their first birthday.

To mobilize the community through partnerships and a unified strategy to reduce Black infant deaths and racial disparities. We will accomplish our mission by building bridges between Pittsburgh's community-based organizations (CBO's), birth workers, medical systems and government, leveraging the approaches to address medical needs and social needs.



Reduce Racial Disparities



Reduce Preterm Birth Rates



Safe Sleep Education



Fourth Trimester Support



Pittsburgh Maternal Mortality Stats

- Pittsburgh's Black maternal mortality rate is higher than Black mortality rates in **97%** of similar cities.
- In Allegheny County, Black women are dying three times higher than White women.

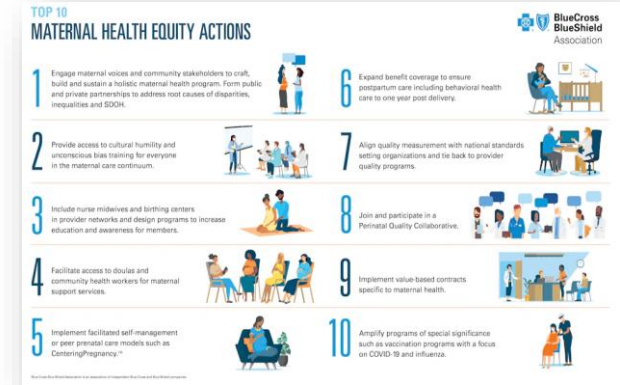


Program Overview

First Steps & Beyond is working to ensure your baby celebrates their first birthday!

A community collaborative focused on addressing Black infant and maternal mortality in Allegheny County, **aiming to:**

- Decrease Black infant and maternal mortality
- Reduce preterm birth rates
- Increase knowledge about safe sleep for infants
- Provide support in 4th trimester



2024 Maternal Health Equity Focus

- Engage Community Voices
- Cultural humility and unconscious bias training
- Include nurse-midwives and birthing centers / education and awareness
- Facilitate access to doulas and community health workers
- CenteringPregnancy

Where does lead hide? It can be found in old paint, contaminated water, and even soil. Mothers exposed to lead can experience issues like:

- **Miscarriage**
- **Premature birth**
- **Low birth weight**

The effects on babies are even more alarming. Lead poisoning can lead to:

- **Developmental delays**
- **Learning disabilities**
- **Behavioral problems**

First Steps and Beyond is partnering with Women for a Healthy Environment to prevent lead poisoning by:

- **Testing homes for lead**
- **Providing education and resources to families**
- **Advocating for policies to protect our communities**



Your Impact



Hospitals & Healthcare Systems

- Identify & address unconscious and conscious bias in healthcare
- Standardize coordination of care & response to emergencies
- Improve delivery of quality prenatal & postpartum care

Healthcare Providers

- Ask questions to better understand patients & what is affecting their lives
- Listen to & believe patients
- Recognize bias in themselves & their teams

States & Communities

- Support review of the causes behind every maternal and infant death (MMRC, FIMR, CDR)
- Identify and address social factors influencing maternal and infant health (such as environmental factors)
- Work to connect and communicate to provide wrap-around care and support

Thank you!



**first steps
& beyond**
Black Maternal & Infant
Community Collaborative

First Steps & Beyond is working to ensure your baby celebrates their first birthday! First Steps & Beyond, a community collaborative focused on addressing Black maternal and infant mortality in Allegheny County, aims to decrease Black infant and maternal mortality rates, reduce preterm birth rates, increase knowledge about safe sleep recommendations for infants, and provide additional support in the fourth trimester.

Learn more at www.FirstStepsandBeyond.org

Email:

firststepsandbeyond@ahn.org

Website:

<https://www.firststepsandbeyond.org/>

